

TRACER STUDY

**GRADUATES OF 2022
UNIVERSITAS AIRLANGGA — BACHELOR OF NURSING & PROFESSIONAL
NURSING EDUCATION PROGRAM**

**FACULTY OF NURSING
UNIVERSITAS AIRLANGGA
2022**

Background

One of the efforts to improve the quality of learning is through continuous evaluation, starting from the learning period up to the time of student graduation. The graduation evaluation, commonly known as a Tracer Study, has been routinely conducted by the Faculty of Nursing. There are two stages of the Tracer Study implementation: one conducted for the graduates of the Faculty of Nursing and another for the employers of graduates. The alumni Tracer Study is carried out simultaneously across all faculties at Universitas Airlangga through the Career and Entrepreneurship Development Center (DPKKA). Meanwhile, the employer Tracer Study is conducted by the Faculty in coordination with the graduates to collect data from the users of graduates.

The Tracer Study form for graduates consists of several types of questions, including identity, further study, first employment, current employment, and suggestions for the development of the study program and the Faculty of Nursing. The identity section includes name, year of university admission, year of professional nurse graduation, home address, current address, phone number, and email address. The further study section includes level of education, month and year of enrollment, area of specialization, and the name of the higher education institution. The first employment section includes month/year of application, month/year of acceptance, name of the institution, department/unit, institutional scale, institutional address, phone number, job title, and initial salary received. The suggestions section covers recommendations regarding formal competencies required by graduates, curriculum development for the nursing program, campus facilities improvement, alumni fundraising, and strengthening alumni communication and networking.

The Tracer Study form for employers consists of items assessing ethics, professional expertise, foreign language proficiency, information technology skills, communication skills, teamwork, and self-development. The Tracer Study must be conducted regularly for new graduates of the Faculty of Nursing, Universitas Airlangga (FKp UA), to ensure that the Faculty receives valuable feedback from alumni and employers. The Tracer Study serves as a cross-sectoral evaluation material within the Faculty. Tracer data can be utilized by Division I as an evaluation of the educational process and as input to improve educational quality and curriculum review. Division II can use Tracer Study data to evaluate learning facilities and infrastructure, as well as to provide input for general improvements and laboratory facilities. Division III, which focuses on collaboration, can utilize tracer data as a basis for establishing partnerships with relevant institutions to enhance the competencies of the Faculty of Nursing alumni. The significant benefits derived from the Tracer Study make it an inseparable component of the entire Nursing education process.

Rationale for the Activity

- As an effort to conduct self-evaluation regarding the competitiveness of graduates in the job market
- As an effort to map the employment absorption rate of graduates in the job market
- As an effort to determine strategies to improve the quality and competitiveness of graduates

Person in Charge and Implementing Team

Person in Charge:

Vice Dean I, Faculty of Nursing, Universitas Airlangga

Implementing Team:

Faculty Ambassador

Success Indicators

Qualitative Indicators

- a. All items in the form are completed and returned by alumni to the Faculty of Nursing, Universitas Airlangga.
- b. The completed forms can be translated and utilized as the basis for writing the Self-Evaluation Report (SER) for the Bachelor of Nursing Program and the Faculty of Nursing, as well as the accreditation document for BAN-PT.

Quantitative Indicators

It is expected that more than 50% of the total alumni sample who receive the forms will return the completed forms to the Faculty of Nursing through the faculty ambassadors.

Activity Implementation

Activity Stages:

1. Preparation

- a. Identify alumni phone numbers and email addresses for sending the Tracer Study forms.
- b. Prepare the Tracer Study form and cover letter.
- c. Prepare the personnel responsible for conducting the Tracer Study.

2. Implementation

The Tracer Study forms are distributed to alumni by the student affairs section when they process graduation documents. Alumni are encouraged to complete and return the forms through coordination with class coordinators, announcements in social media groups, and direct contact via telephone with the respective graduates.

3. Reporting

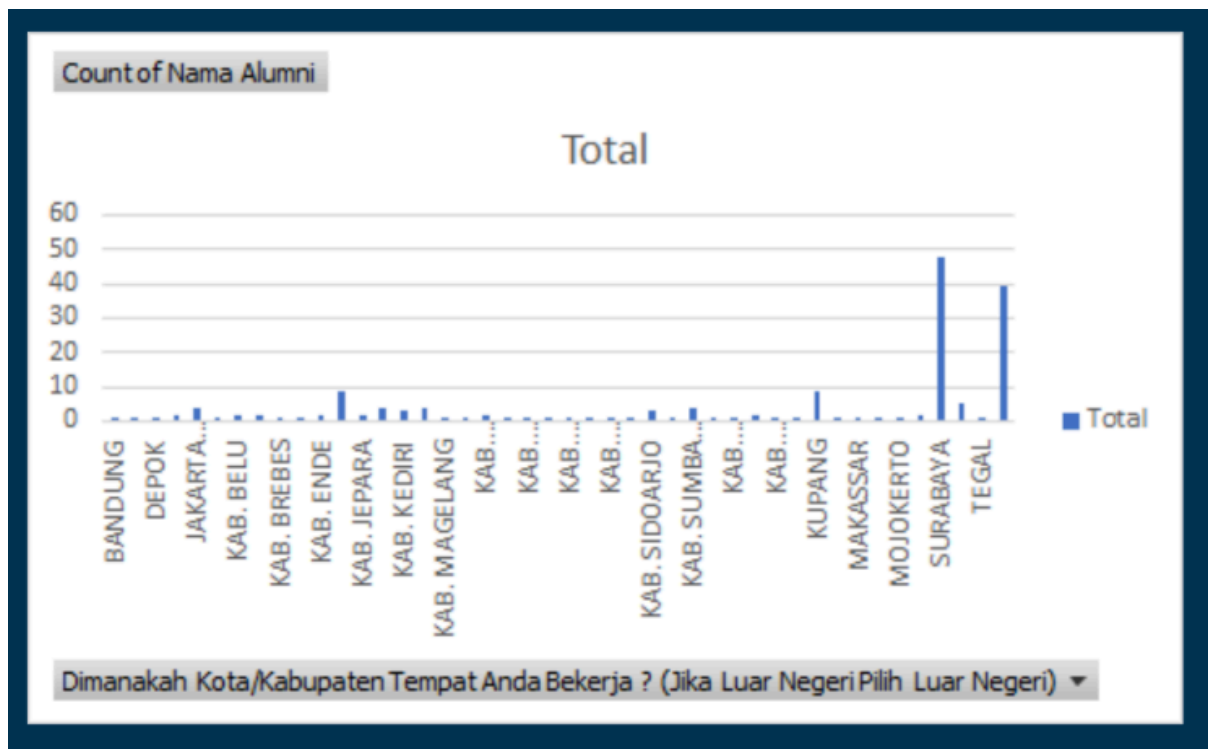
- a. Document Tracer Study data.
- b. Compile and summarize the Tracer Study data.
- c. Prepare the final report.

RESPONDENT PROFILE

Response Rate

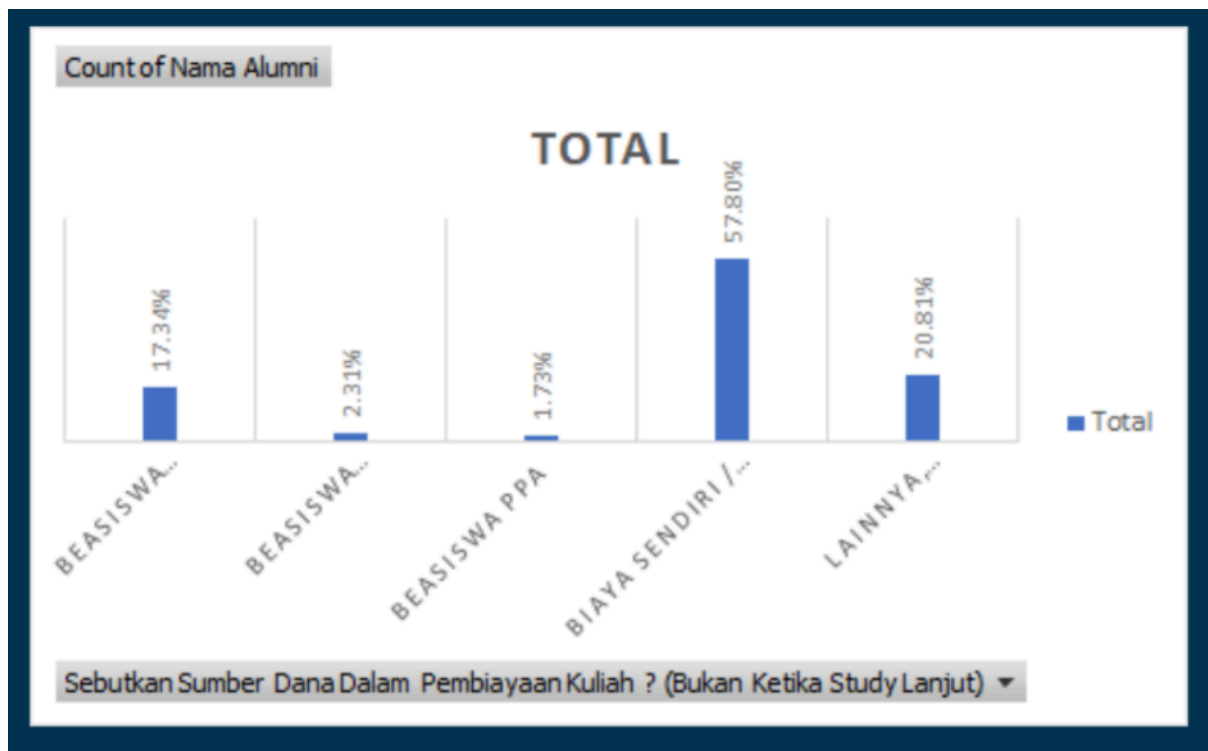
	Total	Percentage
Target Population (a)	173	
Uncontacted Population (b)	0	
Target Subjects (c = a - b)	0	
Number of Respondents with Complete Responses (d)	173	
Number of Respondents with Incomplete Responses	0	
Gross Response Rate {e = (d / a) × 100}		100%
Net Response Rate {f = (d / c) × 100}		100%

Place of Origin of Respondents



In which city/regency do you work? (If abroad, select "abroad")

Source of Tuition Funding



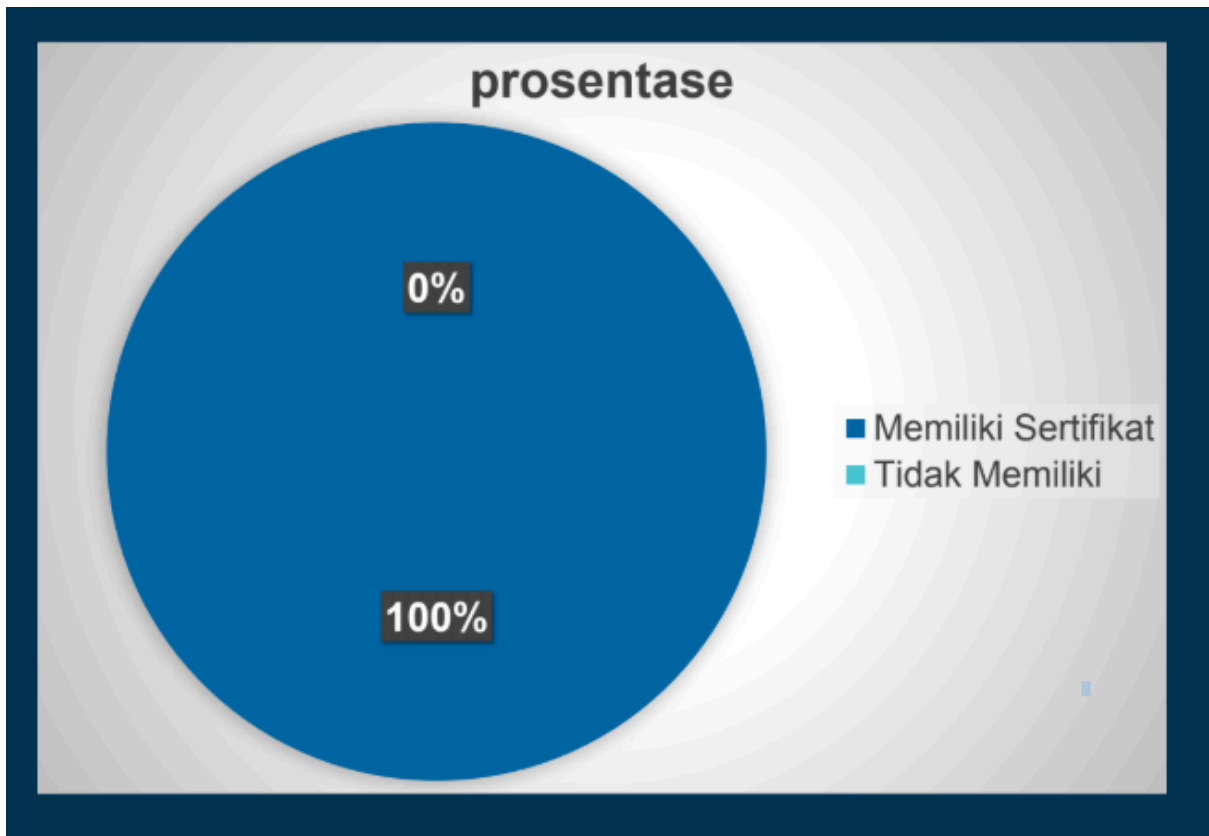
What are the sources of funding for tuition fees? (not for further studies)

Post-Graduation Activities



- Working
- Pursuing Master's Degree (Postgraduate Studies)

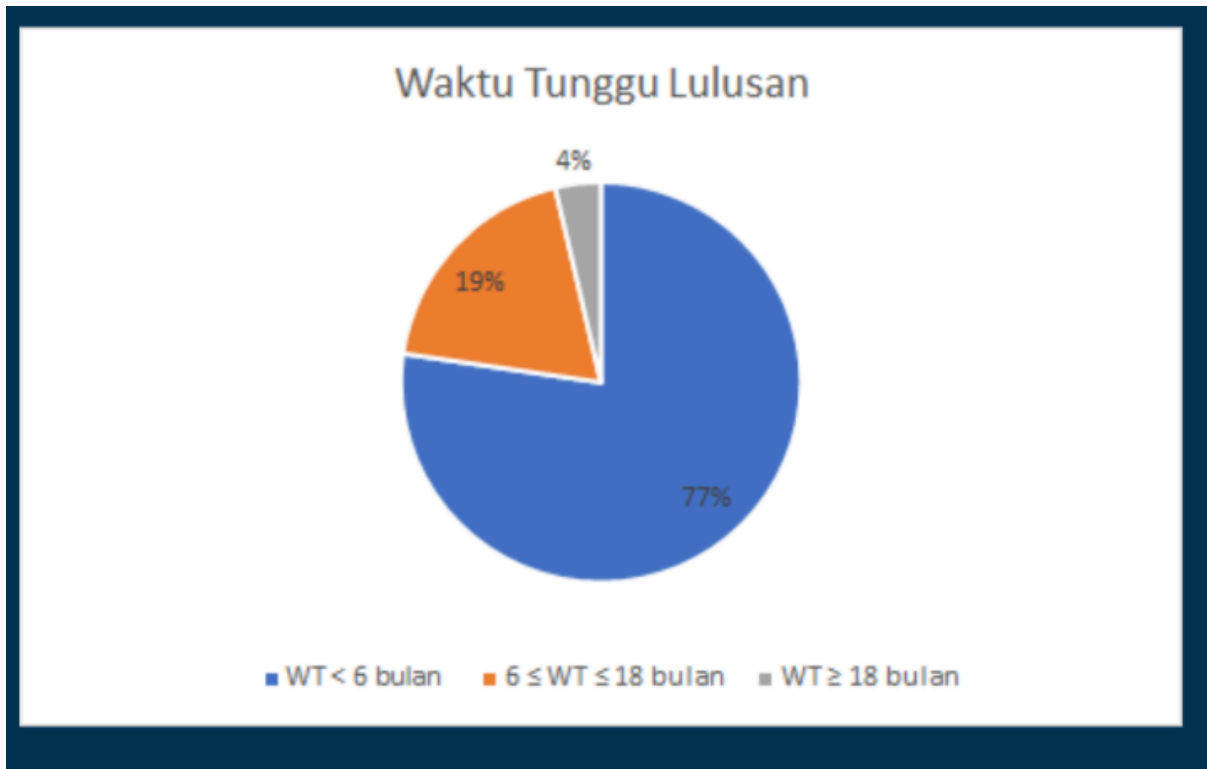
Competency Certification



- Have Certificate
- Do Not Have

WORKING / AS AN EMPLOYEE

Time to Obtain First Job

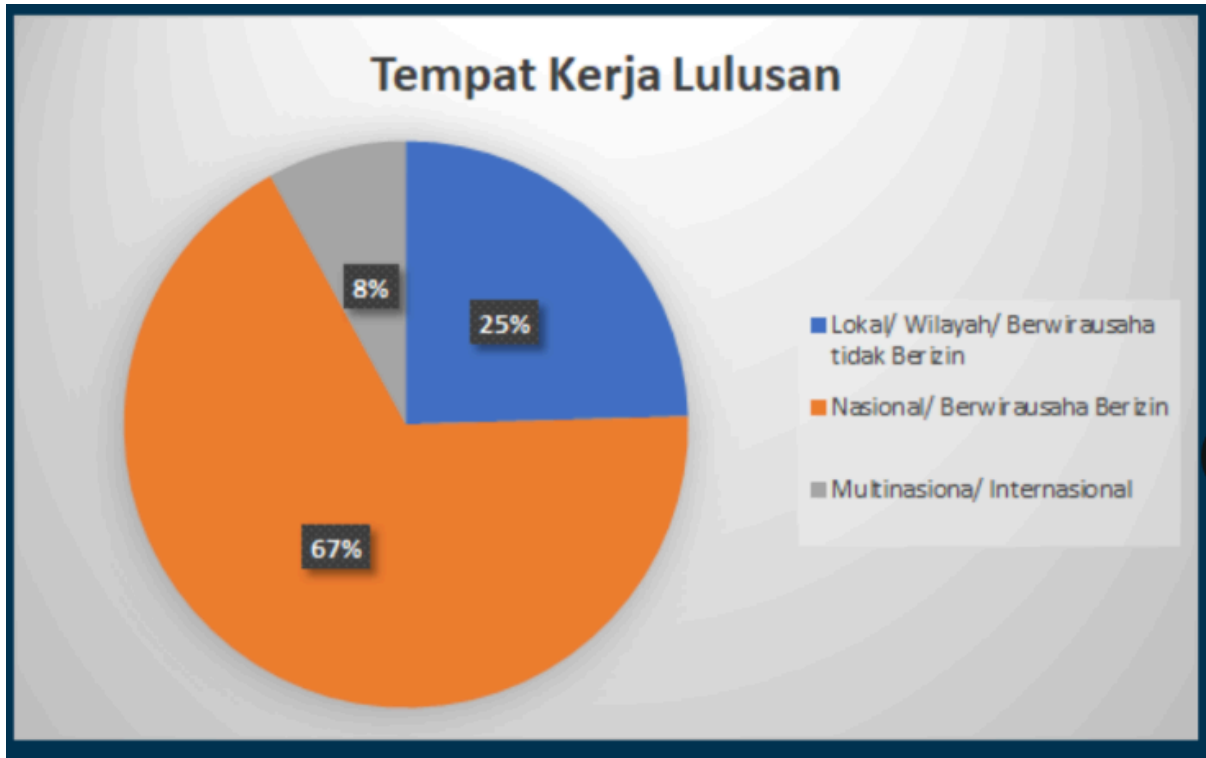


Waiting Time < 6 months

6 < Waiting Time < 18 months

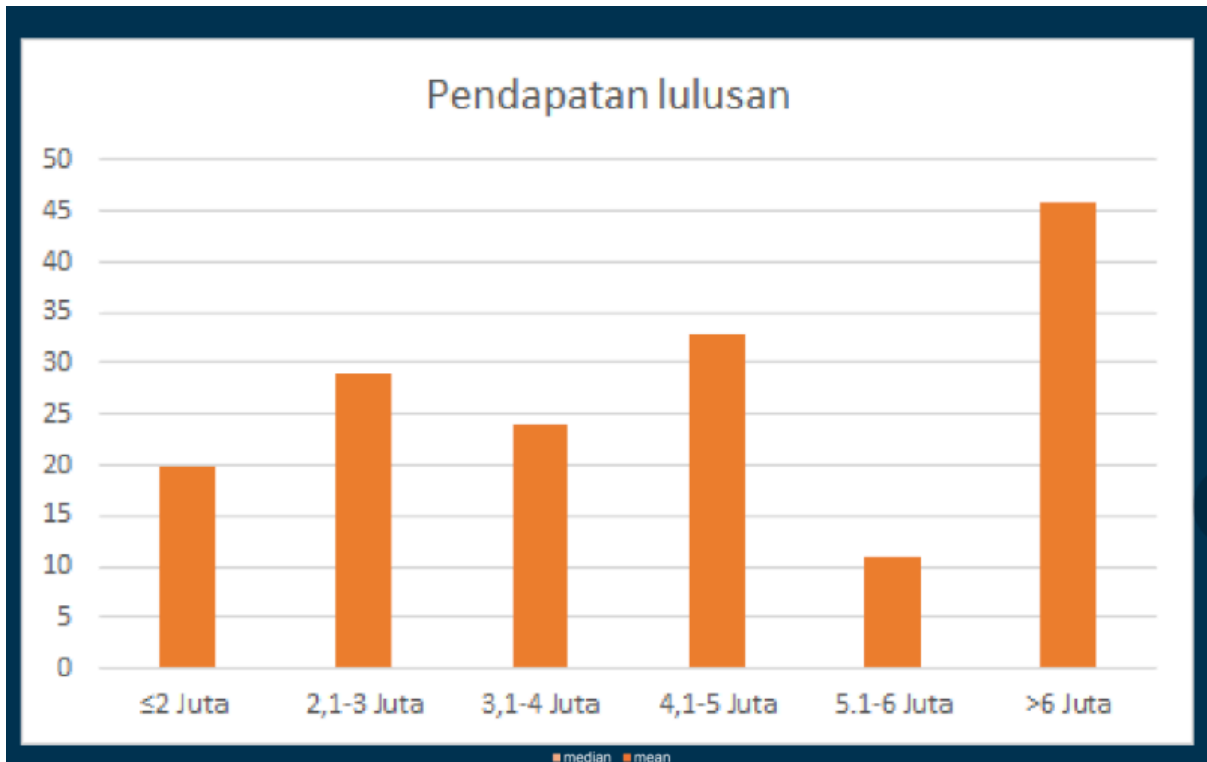
Waiting Time > 18 months

Company of Employment



- Local/Regional (Non-Licensed Entrepreneurship)
- National (Licensed Entrepreneurship)
- Multinational/International

Graduate Income

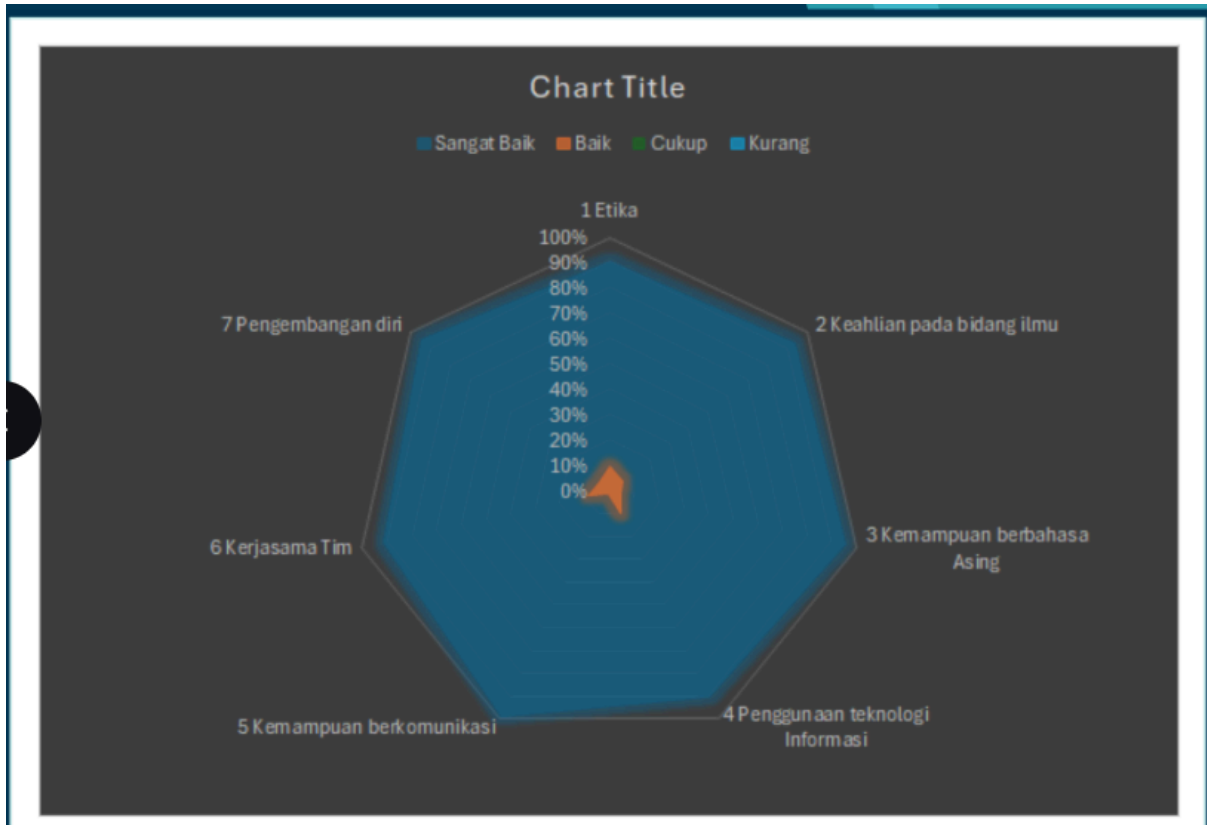


Job Relevance to Field of Study



- Low
- Moderate
- High

Stakeholder Satisfaction



No	Jenis Kemampuan	Sangat Baik	Baik	Cukup	Kuran
1	Etika	90.34%	9.66%	0	0
2	Keahlian pada bidang ilmu	93.79%	6.21%	0	0
3	Kemampuan berbahasa Asing	95.17%	4.83%	0	0
4	Penggunaan teknologi Informasi	90.34%	9.66%	0	0
5	Kemampuan berkomunikasi	98.62%	1.38%	0	0
6	Kerjasama Tim	91.72%	8.28%	0	0
7	Pengembangan diri	95.17%	4.83%	0	0
	TOTAL	655.17%	44.83%	0	0

NO	Type of Competence	Excellent	Good	Fair	Poor
	Ethics	90.34%	9.66%	0	0
	Professional Expertise	93.79%	6.21%	0	0
	Foreign Language Proficiency	95.17%	4.83%	0	0
	Information	90.34%	9.66%	0	0

	Technology Skills				
	Communication Skills	98.62%	1.38%	0	0
	Teamwork	91.72%	8.28%	0	0
	Self-Development	95.17%	4.83%	0	0
	Total	655.17%	44.83%	0	0

Thank you